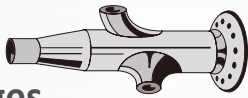




Geldbach UK Ltd

Carbon and Alloy Steel Pipe, Fittings & Flanges



ASME B16.5

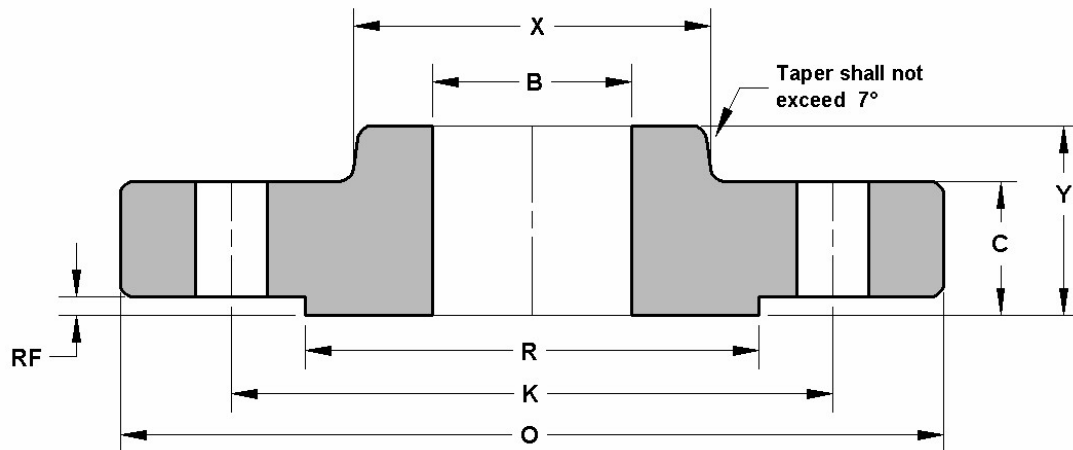
Flanges

Geldbach UK Ltd 
Carbon and Alloy Steel Pipe, Fittings & Flanges

Slip On Flanges

150 Lb

ASME B16.5



Dimensions are in mm

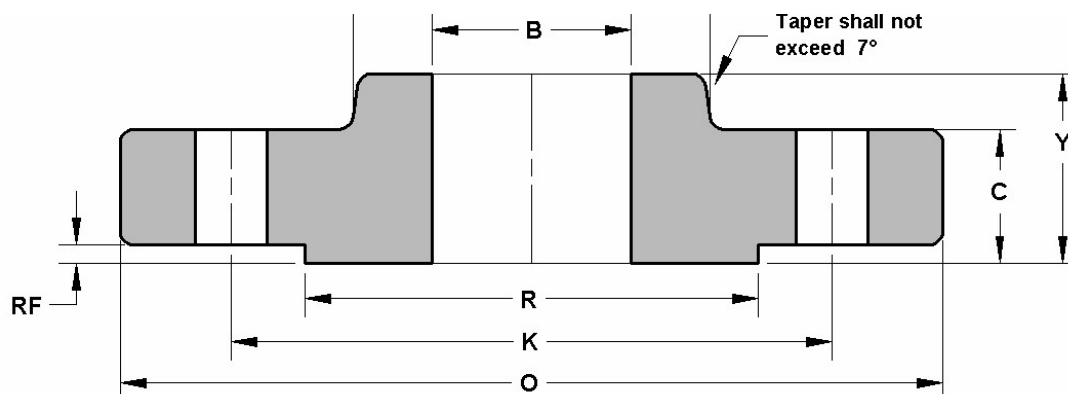
DN	O	C	X	K	Y	RF	R	B	Ø HOLES	NO. HOLES	Kg. APPROX
1/2	88.9	11.1	30.2	60.4	15.7	1.5	35.0	22.3	15.7	4	0.4
3/4	98.5	12.7	38.1	69.8	15.7	1.5	42.9	27.6	15.7	4	0.7
1"	107.9	14.2	49.2	79.2	17.5	1.5	50.8	34.5	15.7	4	0.8
1"1/4	117.3	15.7	58.6	88.9	20.5	1.5	63.5	43.1	15.7	4	1.1
1"1/2	127.0	17.5	65.0	98.5	22.3	1.5	73.1	49.5	15.7	4	1.4
2"	152.4	19.0	77.7	120.6	25.4	1.5	91.9	61.9	19.0	4	2.2
2"1/2	177.8	22.3	90.4	139.7	28.4	1.5	104.6	74.6	19.0	4	3.6
3"	190.5	23.8	107.9	152.4	30.2	1.5	127.0	90.6	19.0	4	4.1
4"	228.6	23.8	134.8	190.5	33.2	1.5	157.2	116.0	19.0	8	5.6
5"	254.0	23.8	163.5	215.9	36.5	1.5	185.6	143.7	22.3	8	6.3
6"	279.4	25.4	192.0	241.3	39.6	1.5	215.9	170.6	22.3	8	7.5
8"	342.9	28.4	246.1	298.4	44.4	1.5	269.7	221.4	22.3	8	12.6
10"	406.4	30.2	304.8	361.9	49.2	1.5	323.8	276.3	25.4	12	18.5
12"	482.6	31.7	365.2	431.8	55.6	1.5	381.0	327.1	25.4	12	28.0
14"	533.4	35.0	400.0	476.2	57.1	1.5	412.7	359.1	28.4	12	36.0
16"	596.9	36.5	457.2	539.7	63.5	1.5	469.9	410.4	28.4	16	46.0
18"	635.0	39.6	504.9	577.8	68.3	1.5	533.4	461.7	31.7	16	50.0
20"	698.5	42.9	558.8	635.0	73.1	1.5	584.2	513.0	31.7	20	64.0
24"	812.8	47.7	663.4	749.3	82.5	1.5	692.1	615.9	35.0	20	89.0

30" and 36" also available.
Contact the sales team for more information.

Slip On Flanges

300 Lb

ASME B16.5



Dimensions are in mm.

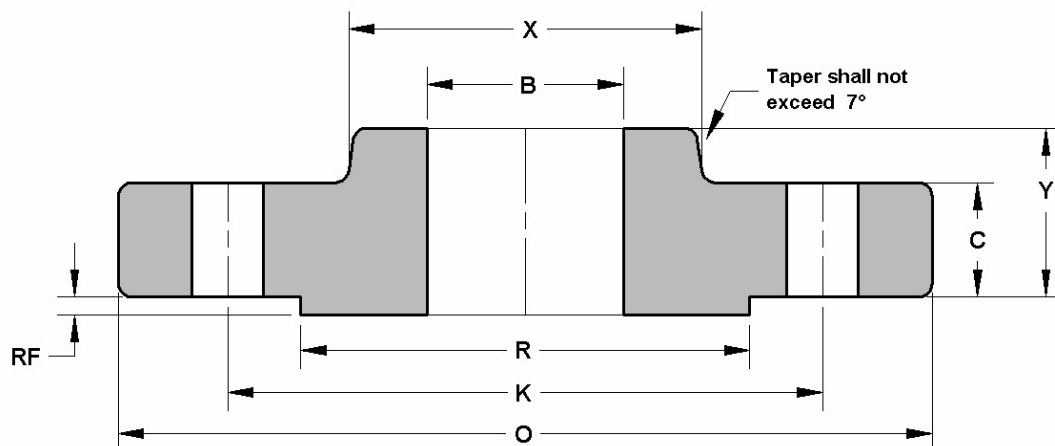
DN	O	C	X	K	Y	RF	R	B	Ø HOLES	N. HOLES	Kg. APPROX
1/2	95.2	14.2	38.1	66.5	22.3	1.5	35.0	22.3	15.7	4	0.7
3/4	117.3	15.7	47.7	82.5	25.4	1.5	42.9	27.6	19.0	4	1.1
1"	123.9	17.5	53.8	88.9	26.9	1.5	50.8	34.5	19.0	4	1.4
1"1/4	133.3	19.0	63.5	98.5	26.9	1.5	63.5	43.1	19.0	4	1.8
1"1/2	155.4	20.5	69.8	114.3	30.2	1.5	73.1	49.5	22.3	4	2.6
2"	165.1	22.3	84.0	127.0	33.2	1.5	91.9	61.9	19.0	8	3.4
2"1/2	190.5	25.4	100.0	149.3	38.1	1.5	104.6	74.6	22.3	8	4.4
3"	209.5	28.4	117.3	168.1	42.9	1.5	127.0	90.6	22.3	8	6.1
4"	254.0	31.7	146.0	200.1	47.7	1.5	157.2	116.0	22.3	8	10.1
5"	279.4	35.0	177.8	234.9	50.8	1.5	185.6	143.7	22.3	8	12.5
6"	317.5	36.5	206.2	269.7	52.3	1.5	215.9	170.6	22.3	12	14.1
8"	381.0	41.1	260.3	330.2	61.9	1.5	269.7	221.4	25.4	12	24.6
10"	444.5	47.7	320.5	387.3	66.5	1.5	323.8	276.3	28.4	16	37.1
12"	520.7	50.8	374.6	450.8	73.1	1.5	381.0	327.1	31.7	16	50.0
14"	584.2	53.8	425.4	514.3	76.2	1.5	412.7	359.1	31.7	20	70.0
16"	647.7	57.1	482.6	571.5	82.5	1.5	469.9	410.4	35.0	20	90.0
18"	711.2	60.4	533.4	628.6	88.9	1.5	533.4	461.7	35.0	24	112.0
20"	774.7	63.5	587.2	685.8	95.2	1.5	584.2	513.0	35.0	24	133.0
24"	914.4	69.8	701.5	812.8	106.4	1.5	692.1	615.9	41.1	24	208.0

30" and 36" also available.
Contact the sales team for more information.

Slip On Flanges

600 Lb

ASME B16.5



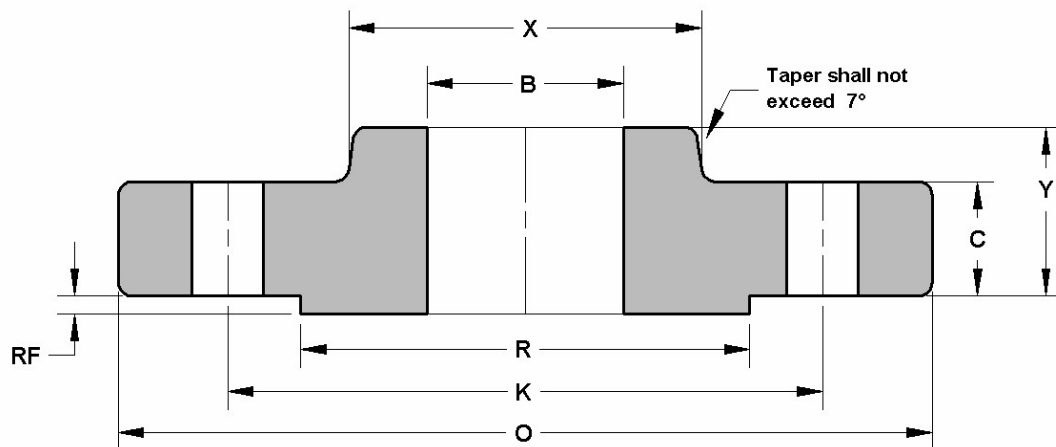
Dimensions are in mm.

DN	O	C	X	K	Y	RF	R	B	Ø HOLES	NO. HOLES	Kg. APPROX
1/2	95.2	14.2	38.1	66.5	22.3	6.3	35.0	22.3	15.7	4	0.8
3/4	117.3	15.7	47.7	82.5	25.4	6.3	42.9	27.6	19.0	4	1.4
1"	123.9	17.5	53.8	88.9	26.9	6.3	50.8	34.5	19.0	4	1.6
1"1/4	133.3	20.5	63.5	98.5	28.4	6.3	63.5	43.1	19.0	4	2.1
1"1/2	155.4	22.3	69.8	114.3	31.7	6.3	73.1	49.5	22.3	4	3.1
2"	165.1	25.4	84.0	127.0	36.5	6.3	91.9	61.9	19.0	8	3.7
2"1/2	190.5	28.4	100.0	149.3	41.1	6.3	104.6	74.6	22.3	8	5.4
3"	209.5	31.7	117.3	168.1	45.9	6.3	127.0	90.6	22.3	8	7.3
4"	273.0	38.1	152.4	215.9	53.8	6.3	157.2	116.0	25.4	8	15.8
5"	330.2	44.4	188.9	266.7	60.4	6.3	185.6	143.7	28.4	8	24.5
6"	355.6	47.7	222.2	292.1	66.5	6.3	215.9	170.6	28.4	12	29.5
8"	419.1	55.6	273.0	349.2	76.2	6.3	269.7	221.4	31.7	12	43.0
10"	508.0	63.5	342.9	431.8	85.8	6.3	323.8	276.3	35.0	16	70.0
12"	558.8	66.5	400.0	488.9	91.9	6.3	381.0	327.1	35.0	20	86.0
14"	603.2	69.8	431.8	527.0	93.7	6.3	412.7	359.1	38.1	20	100.0
16"	685.8	76.2	495.3	603.2	106.4	6.3	469.9	410.4	41.1	20	142.0
18"	742.9	82.5	546.1	654.0	117.3	6.3	533.4	461.7	44.4	20	175.0
20"	812.8	88.9	609.6	723.9	127.0	6.3	584.2	513.0	44.4	24	232.0
24"	939.8	101.6	717.5	838.2	139.7	6.3	692.1	615.9	50.8	24	330.0

30" and 36" also available.
Contact the sales team for more information.

Slip On Flanges 900 Lb

ASME B16.5



Dimensions are in mm.

DN	O	C	X	K	Y	RF	R	B	Ø HOLES	NO. HOLES	Kg. APPROX
1/2											
3/4											
1"											
1 1/4"											
1 1/2"											
2"											
2 1/2"											
3"	241.3	38.1	127.0	190.5	53.8	6.3	127.0	90.6	25.4	8	11.6
4"	292.1	44.4	158.7	234.9	69.8	6.3	157.2	116.0	31.7	8	19.8
5"	349.2	50.8	190.5	279.4	79.2	6.3	185.6	143.7	35.0	8	32.0
6"	381.0	55.6	234.9	317.5	85.8	6.3	215.9	170.6	31.7	12	41.2
8"	469.9	63.5	298.4	393.7	101.6	6.3	269.7	221.4	38.1	12	78.0
10"	546.1	69.8	368.3	469.9	107.9	6.3	323.8	276.3	38.1	16	110.0
12"	609.6	79.2	419.1	533.4	117.3	6.3	381.0	327.1	38.1	20	149.0
14"	641.3	85.8	450.8	558.8	130.0	6.3	412.7	359.1	41.1	20	181.0
16"	704.8	88.9	508.0	615.9	133.3	6.3	469.9	410.4	44.4	20	194.0
18"	787.4	101.6	565.1	685.8	152.4	6.3	533.4	461.7	50.8	20	274.0
20"	857.2	107.9	622.3	749.3	158.7	6.3	584.2	513.0	53.8	20	332.0
24"	1041.4	139.7	749.3	901.7	203.2	6.3	692.1	615.9	66.5	20	637.0

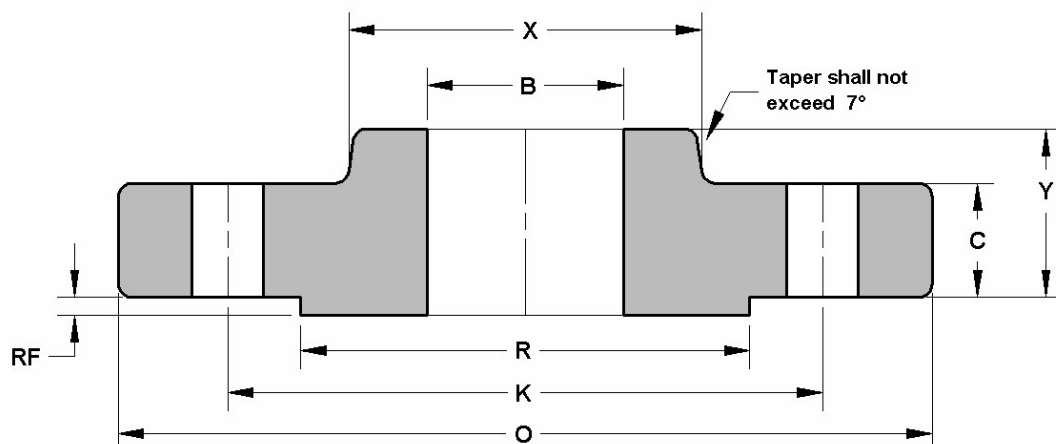
Use 1500 Lbs dimensions for these sizes.

30" and 36" also available.
Contact the sales team for more information.

Slip On Flanges

1500 Lb

ASME B16.5



Dimensions are in mm.

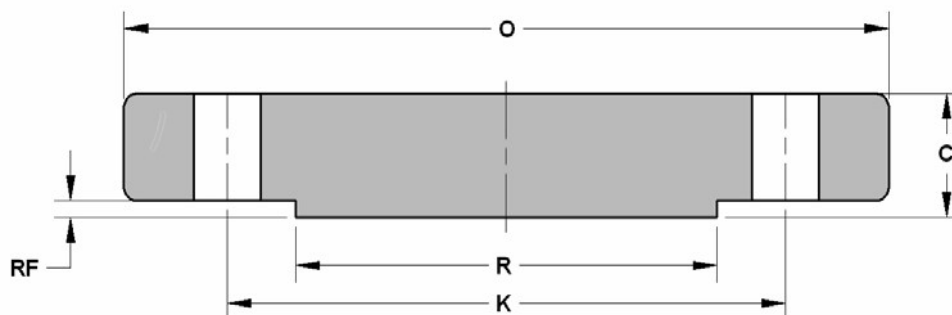
DN	O	C	X	K	Y	RF	R	B	Ø HOLES	NO. HOLES	Kg. APPROX
1/2	120.6	22.3	38.1	82.5	31.7	6.3	35.0	22.3	22.3	4	1.7
3/4	130.0	25.4	44.4	88.9	35.0	6.3	42.9	27.6	22.3	4	2.3
1"	149.3	28.4	52.3	101.6	41.1	6.3	50.8	34.5	25.4	4	3.4
1"1/4	158.7	28.4	63.5	111.2	41.1	6.3	63.5	43.1	25.4	4	3.9
1"1/2	177.8	31.7	69.8	123.9	44.4	6.3	73.1	49.5	28.4	4	5.4
2"	215.9	38.1	104.6	165.1	57.1	6.3	91.9	61.9	25.4	8	9.8
2"1/2	244.3	41.1	123.9	190.5	63.5	6.3	104.6	74.6	28.4	8	13.7
3"	266.7	47.7	133.3	203.2		6.3	127.0		31.7	8	18.0
4"	311.1	53.8	162.0	241.3		6.3	157.2		35.0	8	27.8
5"	374.6	73.1	196.8	292.1		6.3	185.6		41.1	8	52.0
6"	393.7	82.5	228.6	317.5		6.3	215.9		38.1	12	61.0
8"	482.6	91.9	292.1	393.7		6.3	269.7		44.4	12	104.0
10"	584.2	107.9	368.3	482.6		6.3	323.8		50.8	12	175.0
12"	673.1	123.9	450.8	571.5		6.3	381.0		53.8	16	264.0
14"	749.3	133.3	495.3	635.0		6.3	412.7		60.4	16	
16"	825.5	146.0	552.4	704.8		6.3	469.9		66.5	16	
18"	914.4	162.0	596.9	774.7		6.3	533.4		73.1	16	
20"	984.2	177.8	641.3	831.8		6.3	584.2		79.2	16	
24"	1168.4	203.2	762.0	990.6		6.3	692.1		91.9	16	

30" and 36" also available.
Contact the sales team for more information.

Blind Flanges

150 Lb

ASME B16.5



Dimensions are in mm.

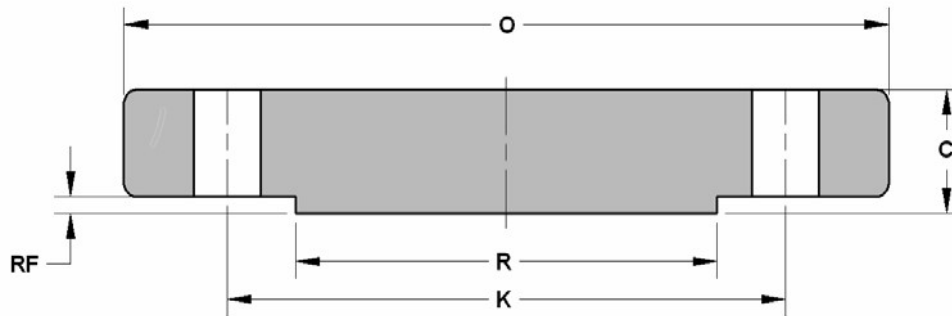
DN	O	C	K	RF	R	Ø HOLES	NO. HOLES	Kg. APPROX
1/2	88.9	11.1	60.4	1.5	35.0	15.7	4	0.4
3/4	98.5	12.7	69.8	1.5	42.9	15.7	4	0.7
1"	107.9	14.2	79.2	1.5	50.8	15.7	4	0.9
1"1/4	117.3	15.7	88.9	1.5	63.5	15.7	4	1.3
1"1/2	127.0	17.5	98.5	1.5	73.1	15.7	4	1.6
2"	152.4	19.0	120.6	1.5	91.9	19.0	4	2.6
2"1/2	177.8	22.3	139.7	1.5	104.6	19.0	4	4.1
3"	190.5	23.8	152.4	1.5	127.0	19.0	4	5.0
4"	228.6	23.8	190.5	1.5	157.2	19.0	8	7.1
5"	254.0	23.8	215.9	1.5	185.6	22.3	8	9.0
6"	279.4	25.4	241.3	1.5	215.9	22.3	8	11.8
8"	342.9	28.4	298.4	1.5	269.7	22.3	8	21.0
10"	406.4	30.2	361.9	1.5	323.8	25.4	12	30.0
12"	482.6	31.7	431.8	1.5	381.0	25.4	12	45.0
14"	533.4	35.0	476.2	1.5	412.7	28.4	12	59.0
16"	596.9	36.5	539.7	1.5	469.9	28.4	16	79.0
18"	635.0	39.6	577.8	1.5	533.4	31.7	16	97.0
20"	698.5	42.9	635.0	1.5	584.2	31.7	20	124.0
24"	812.8	47.7	749.3	1.5	692.1	35.0	20	188.0

30" and 36" also available.
Contact the sales team for more information.

Blind Flanges

300 Lb

ASME B16.5



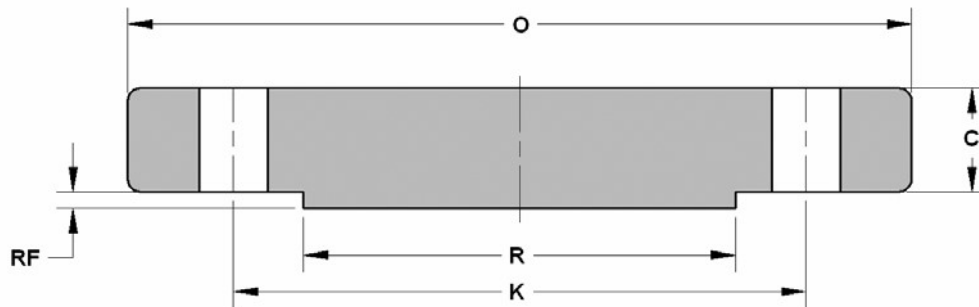
Dimensions are in mm.

DN	O	C	K	RF	R	Ø HOLES	N. HOLES	Kg. APPROX
1/2	95.2	14.2	66.5	1.5	35.0	15.7	4	0.7
3/4	117.3	15.7	82.5	1.5	42.9	19.0	4	1.2
1"	123.9	17.5	88.9	1.5	50.8	19.0	4	1.5
1"1/4	133.3	19.0	98.5	1.5	63.5	19.0	4	2.0
1"1/2	155.4	20.5	114.3	1.5	73.1	22.3	4	2.9
2"	165.1	22.3	127.0	1.5	91.9	19.0	8	3.4
2"1/2	190.5	25.4	149.3	1.5	104.6	22.3	8	5.1
3"	209.5	28.4	168.1	1.5	127.0	22.3	8	7.0
4"	254.0	31.7	200.1	1.5	157.2	22.3	8	11.8
5"	279.4	35.0	234.9	1.5	185.6	22.3	8	15.5
6"	317.4	36.5	269.7	1.5	215.9	22.3	12	21.3
8"	381.0	41.1	330.2	1.5	269.7	25.4	12	35.2
10"	444.5	47.7	387.3	1.5	323.8	28.4	16	57.0
12"	520.7	50.8	450.8	1.5	381.0	31.7	16	82.0
14"	584.2	53.8	514.3	1.5	412.7	31.7	20	106.0
16"	647.7	57.1	571.5	1.5	469.9	35.0	20	140.0
18"	711.2	60.4	628.6	1.5	533.4	35.0	24	178.0
20"	774.7	63.5	685.8	1.5	584.2	35.0	24	223.0
24"	914.4	69.8	812.8	1.5	692.1	41.1	24	345.0

30" and 36" also available.
Contact the sales team for more information.

Blind Flanges 600 Lb

ASME B16.5



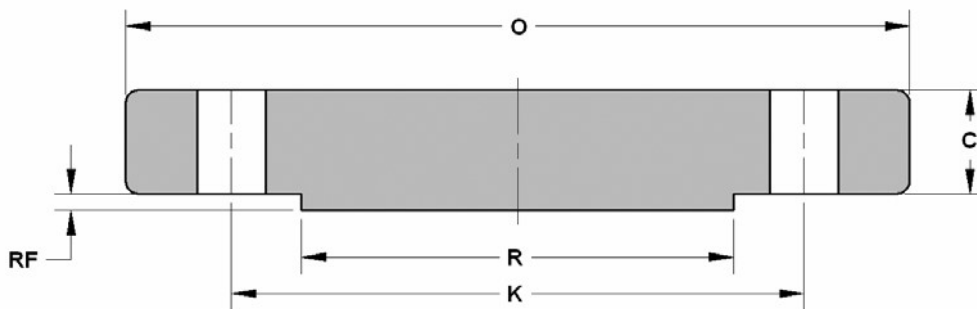
Dimensions are in mm.

DN	O	C	K	RF	R	Ø HOLES	NO . HOLES	Kg. APPROX
1/2	95.2	14.2	66.5	6.3	35.0	15.7	4	0.7
3/4	117.3	15.7	82.5	6.3	42.9	19.0	4	1.2
1"	123.9	17.5	88.9	6.3	50.8	19.0	4	1.5
1"1/4	133.3	20.5	98.5	6.3	63.5	19.0	4	2.0
1"1/2	155.4	22.3	114.3	6.3	73.1	22.3	4	3.2
2"	165.1	25.4	127.0	6.3	91.9	19.0	8	4.3
2"1/2	190.5	28.4	149.3	6.3	104.6	22.3	8	6.0
3"	209.5	31.7	168.1	6.3	127.0	22.3	8	8.0
4"	273.0	38.1	215.9	6.3	157.2	25.4	8	18.0
5"	330.2	44.4	266.7	6.3	185.6	28.4	8	28.5
6"	355.6	47.7	292.1	6.3	215.9	28.4	12	35.5
8"	419.1	55.6	349.2	6.3	269.7	31.7	12	58.0
10"	508.0	63.5	431.8	6.3	323.8	35.0	16	98.0
12"	558.8	66.5	488.9	6.3	381.0	35.0	20	125.0
14"	603.2	69.8	527.0	6.3	412.7	38.1	20	151.0
16"	685.8	76.2	603.2	6.3	469.9	41.1	20	215.0
18"	742.9	82.5	654.0	6.3	533.4	44.4	20	287.0
20"	812.8	88.9	723.9	6.3	584.2	44.4	24	366.0
24"	939.8	101.6	838.2	6.3	692.1	50.8	24	532.0

30" and 36" also available.
Contact the sales team for more information.

Blind Flanges 900 Lb

ASME B16.5



Dimensions are in mm.

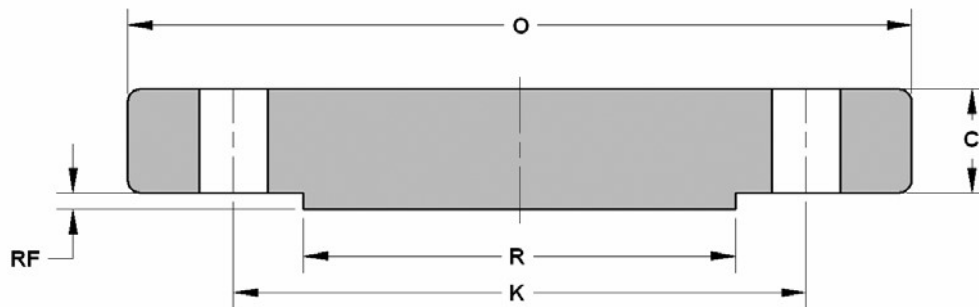
DN	O	C	K	RF	R	Ø HOLES	NO . HOLES	Kg. APPROX
1/2								
3/4								
1"								
1" 1/4								
1" 1/2								
2"								
2" 1/2								
3"	241.3	38.1	190.5	6.3	127.0	25.4	8	13.1
4"	292.1	44.4	234.9	6.3	157.2	31.7	8	22.1
5"	349.2	50.8	279.4	6.3	185.6	35.0	8	36.5
6"	381.0	55.6	317.5	6.3	215.9	31.7	12	47.4
8"	469.9	63.5	393.7	6.3	269.7	38.1	12	82.5
10"	546.1	69.8	469.9	6.3	323.8	38.1	16	123.0
12"	609.6	79.2	533.4	6.3	381.0	38.1	20	174.0
14"	641.3	85.8	558.8	6.3	412.7	41.1	20	213.0
16"	704.8	88.9	615.9	6.3	469.9	44.4	20	280.0
18"	787.4	101.6	685.8	6.3	533.4	50.8	20	400.0
20"	857.2	107.9	749.3	6.3	584.2	53.8	20	503.0
24"	1041.4	139.7	901.7	6.3	692.1	66.5	20	950.0

Use 1500 Lbs dimensions for these sizes.

30" and 36" also available.
Contact the sales team for more information.

Blind Flanges 1500 Lb

ASME B16.5



Dimensions are in mm.

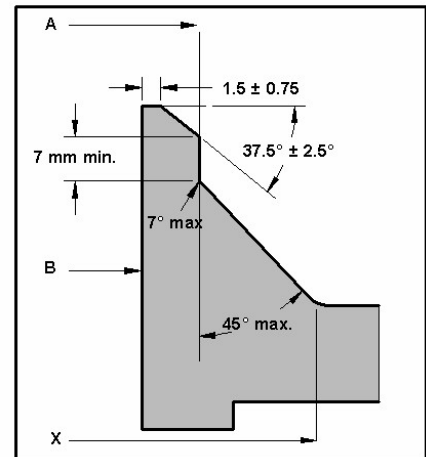
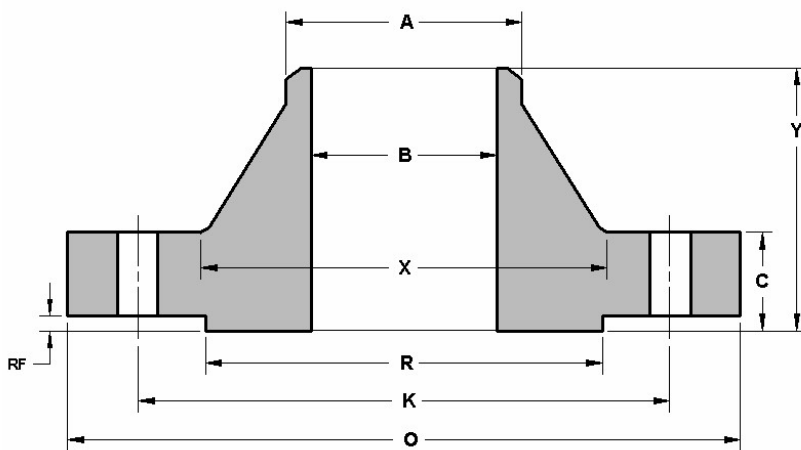
DN	O	C	K	RF	R	Ø HOLES	NO - HOLES	Kg. APPROX
1/2	120.6	22.3	82.5	6.3	35.0	22.3	4	1.8
3/4	130.0	25.4	88.9	6.3	42.9	22.3	4	2.4
1"	149.3	28.4	101.6	6.3	50.8	25.4	4	3.6
1"1/4	158.7	28.4	111.2	6.3	63.5	25.4	4	4.1
1"1/2	177.8	31.7	123.9	6.3	73.1	28.4	4	5.8
2"	215.9	38.1	165.1	6.3	91.9	25.4	8	10.1
2"1/2	244.3	41.1	190.5	6.3	104.6	28.4	8	14.0
3"	266.7	47.7	203.2	6.3	127.0	31.7	8	19.0
4"	311.1	53.8	241.3	6.3	157.2	35.0	8	30.0
5"	374.6	73.1	292.1	6.3	185.6	41.1	8	58.0
6"	393.7	82.5	317.5	6.3	215.9	38.1	12	72.0
8"	482.6	91.9	393.7	6.3	269.7	44.4	12	122.0
10"	584.2	107.9	482.6	6.3	323.8	50.8	12	210.0
12"	673.1	123.9	571.5	6.3	381.0	53.8	16	315.0
14"	749.3	133.3	635.0	6.3	412.7	60.4	16	423.0
16"	825.5	146.0	704.8	6.3	469.9	66.5	16	590.0
18"	914.4	162.0	774.7	6.3	533.4	73.1	16	795.0
20"	984.2	177.8	831.8	6.3	584.2	79.2	16	1030.0
24"	1168.4	203.2	990.6	6.3	692.1	91.9	16	1650.0

30" and 36" also available.
Contact the sales team for more information.

Welding Neck Flanges

ASME B16.5

150 Lb



Dimensions are in mm

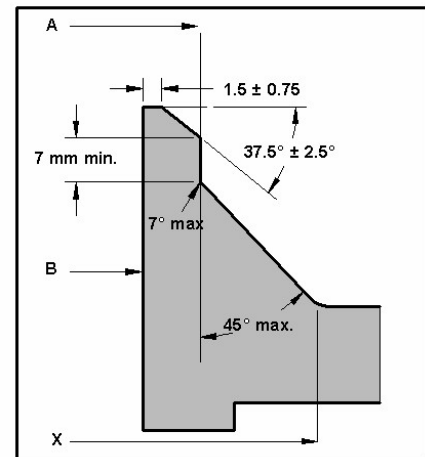
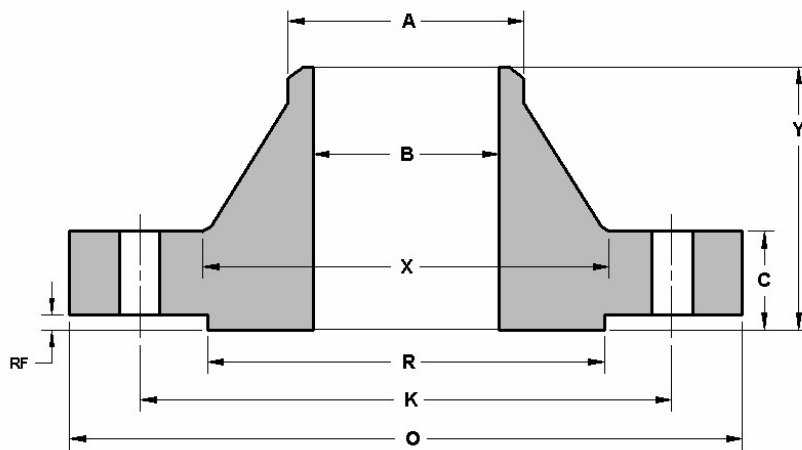
DN	O	C	X	A	K	Y	RF	R	B	Ø HOLES	NO. HOLES	Kg. APPROX
1/2	88.9	11.1	30.2	21.3	60.4	47.7	1.5	35.0	As per requested schedule.	15.7	4	0.5
3/4	98.5	12.7	38.1	26.6	69.8	52.3	1.5	42.9		15.7	4	0.7
1"	107.9	14.2	49.2	33.5	79.2	55.6	1.5	50.8		15.7	4	1.1
1" 1/4	117.3	15.7	58.6	42.1	88.9	57.1	1.5	63.5		15.7	4	1.5
1" 1/2	127.0	17.5	65.0	48.2	98.5	61.9	1.5	73.1		15.7	4	1.8
2"	152.4	19.0	77.7	60.4	120.6	63.5	1.5	91.9		19.0	4	2.7
2" 1/2	177.8	22.3	90.4	73.1	139.7	69.8	1.5	104.6		19.0	4	4.4
3"	190.5	23.8	107.9	88.9	152.4	69.8	1.5	127.0		19.0	4	5.2
4"	228.6	23.8	134.8	114.3	190.5	76.2	1.5	157.2		19.0	8	7.5
5"	254.0	23.8	163.5	141.2	215.9	88.9	1.5	185.6		22.3	8	9.2
6"	279.4	25.4	192.0	168.4	241.3	88.9	1.5	215.9		22.3	8	11.0
8"	342.9	28.4	246.1	219.2	298.4	101.6	1.5	269.7		22.3	8	18.3
10"	406.4	30.2	304.8	273.0	361.9	101.6	1.5	323.8		25.4	12	25.0
12"	482.6	31.7	365.2	323.8	431.8	114.3	1.5	381.0		25.4	12	39.0
14"	533.4	35.0	400.0	355.6	476.2	127.0	1.5	412.7		28.4	12	51.0
16"	596.9	36.5	457.2	406.4	539.7	127.0	1.5	469.9		28.4	16	60.0
18"	635.0	39.6	504.9	457.2	577.8	139.7	1.5	533.4		31.7	16	71.0
20"	698.5	42.9	558.8	508.0	635.0	144.5	1.5	584.2		31.7	20	88.0
24"	812.8	47.7	663.4	609.6	749.3	152.4	1.5	692.1		35.0	20	119.0

30" and 36" also available.
Contact the sales team for more information.

Welding Neck Flanges

300 Lb

ASME B16.5



Dimensions are in mm.

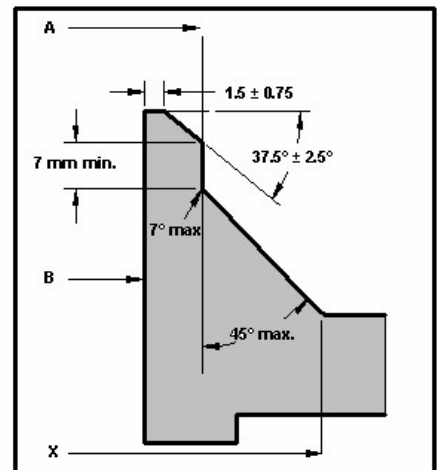
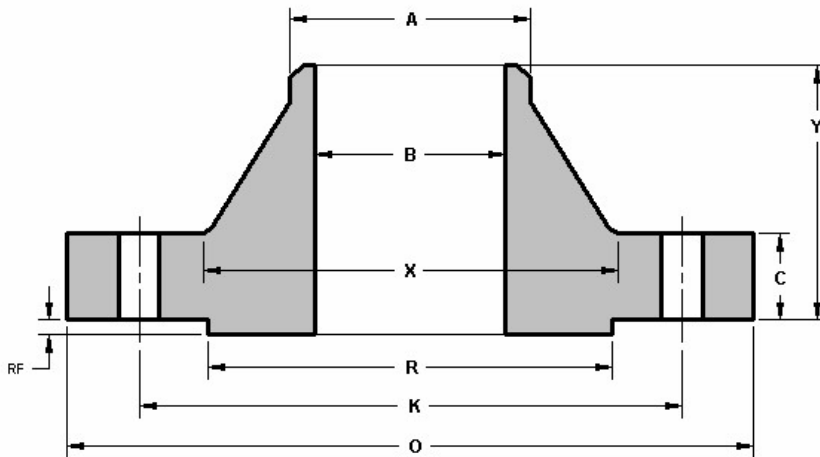
DN	O	C	X	A	K	Y	RF	R	B	Ø HOLES	N. HOLES	Kg. APPROX
1/2	95.2	14.2	38.1	21.3	66.5	52.3	1.5	35.0	As per requested schedule.	15.7	4	0.9
3/4	117.3	15.7	47.7	26.6	82.5	57.1	1.5	42.9		19.0	4	1.5
1"	123.9	17.5	53.8	33.5	88.9	61.9	1.5	50.8		19.0	4	1.9
1"1/4	133.3	19.0	63.5	42.1	98.5	65.0	1.5	63.5		19.0	4	2.6
1"1/2	155.4	20.5	69.8	48.2	114.3	68.3	1.5	73.1		22.3	4	3.3
2"	165.1	22.3	84.0	60.4	127.0	69.8	1.5	91.9		19.0	8	3.6
2"1/2	190.5	25.4	100.0	73.1	149.3	76.2	1.5	104.6		22.3	8	5.4
3"	209.5	28.4	117.3	88.9	168.1	79.2	1.5	127.0		22.3	8	7.4
4"	254.0	31.7	146.0	114.3	200.1	85.8	1.5	157.2		22.3	8	11.9
5"	279.4	35.0	177.8	141.2	234.9	98.5	1.5	185.6		22.3	8	16.0
6"	317.5	36.5	206.2	168.4	269.7	98.5	1.5	215.9		22.3	12	20.2
8"	381.0	41.1	260.3	219.2	330.2	111.2	1.5	269.7		25.4	12	31.0
10"	444.5	47.7	320.5	273.0	387.3	117.3	1.5	323.8		28.4	16	44.3
12"	520.7	50.8	374.6	323.8	450.8	130.0	1.5	381.0		31.7	16	64.0
14"	584.2	53.8	425.4	355.6	514.3	142.7	1.5	412.7		31.7	20	88.0
16"	647.7	57.1	482.6	406.4	571.5	146.0	1.5	469.9		35.0	20	113.0
18"	711.2	60.4	533.4	457.2	628.6	158.7	1.5	533.4		35.0	24	134.0
20"	774.7	63.5	587.2	508.0	685.8	162.0	1.5	584.2		35.0	24	171.0
24"	914.4	69.8	701.5	609.6	812.8	168.1	1.5	692.1		41.1	24	238.0

30" and 36" also available.
Contact the sales team for more information.

Welding Neck Flanges

600 Lb

ASME B16.5



Dimensions are in mm.

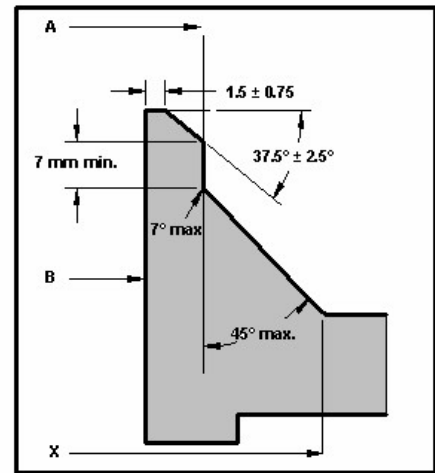
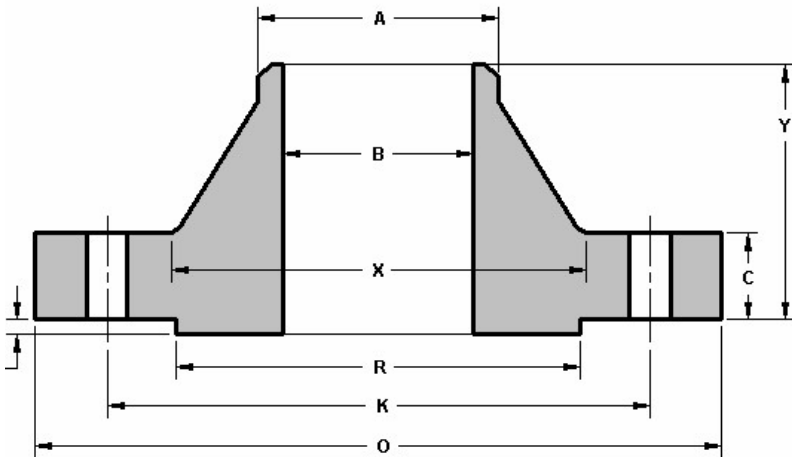
DN	O	C	X	A	K	Y	RF	R	B	Ø HOLES	NO. HOLES	Kg. APPROX
1/2	95.2	14.2	38.1	21.3	66.5	52.3	6.3	35.0	As per requested schedule.	15.7	4	0.9
3/4	117.3	15.7	47.7	26.6	82.5	57.1	6.3	42.9		19.0	4	1.5
1"	123.9	17.5	53.8	33.5	88.9	61.9	6.3	50.8		19.0	4	1.9
1 1/4"	133.3	20.5	63.5	42.1	98.5	66.5	6.3	63.5		19.0	4	2.6
1 1/2"	155.4	22.3	69.8	48.2	114.3	69.8	6.3	73.1		22.3	4	3.3
2"	165.1	25.4	84.0	60.4	127.0	73.1	6.3	91.9		19.0	8	4.7
2 1/2"	190.5	28.4	100.0	73.1	149.3	79.2	6.3	104.6		22.3	8	6.5
3"	209.5	31.7	117.3	88.9	168.1	82.5	6.3	127.0		22.3	8	8.7
4"	273.0	38.1	152.4	114.3	215.9	101.6	6.3	157.2		25.4	8	18.1
5"	330.2	44.4	188.9	141.2	266.7	114.3	6.3	185.6		28.4	8	30.5
6"	355.6	47.7	222.2	168.4	292.1	117.3	6.3	215.9		28.4	12	36.2
8"	419.1	55.6	273.0	219.2	349.2	133.3	6.3	269.7		31.7	12	56.5
10"	508.0	63.5	342.9	273.0	431.8	152.4	6.3	323.8		35.0	16	91.0
12"	558.8	66.5	400.0	323.8	488.9	155.4	6.3	381.0		35.0	20	105.0
14"	603.2	69.8	431.8	355.6	527.0	165.1	6.3	412.7		38.1	20	127.0
16"	685.8	76.2	495.3	406.4	603.2	177.8	6.3	469.9		41.1	20	178.0
18"	742.9	82.5	546.1	457.2	654.0	184.1	6.3	533.4		44.4	20	216.0
20"	812.8	88.9	609.6	508.0	723.9	190.5	6.3	584.2		44.4	24	268.0
24"	939.8	101.6	717.5	609.6	838.2	203.2	6.3	692.1		50.8	24	380.0

30" and 36" also available.
Contact the sales team for more information.

Welding Neck Flanges

900 Lb

ASME B16.5



Dimensions are in mm.

DN	O	C	X	A	K	Y	RF	R	B	Ø HOLES	NO. HOLES	Kg. APPROX
1/2												
3/4												
1"												
1 1/4"												
1 1/2"												
2"												
2 1/2"												
3"	241.3	38.1	127.0	88.9	190.5	101.6	6.3	127.0		25.4	8	15.0
4"	292.1	44.4	158.7	114.3	234.9	114.3	6.3	157.2		31.7	8	24.0
5"	349.2	50.8	190.5	141.2	279.4	127.0	6.3	185.6		35.0	8	37.0
6"	381.0	55.6	234.9	168.4	317.5	139.7	6.3	215.9		31.7	12	50.0
8"	469.9	63.5	298.4	219.2	393.7	162.0	6.3	269.7		38.1	12	85.0
10"	546.1	69.8	368.3	273.0	469.9	184.1	6.3	323.8		38.1	16	127.0
12"	609.6	79.2	419.1	323.8	533.4	200.1	6.3	381.0		38.1	20	170.0
14"	641.3	85.8	450.8	355.6	558.8	212.8	6.3	412.7		41.1	20	198.0
16"	704.8	88.9	508.0	406.4	615.9	215.9	6.3	469.9		44.4	20	224.0
18"	787.4	101.6	565.1	457.2	685.8	228.6	6.3	533.4		50.8	20	300.0
20"	857.2	107.9	622.3	508.0	749.3	247.6	6.3	584.2		53.8	20	374.0
24"	1041.4	139.7	749.3	609.6	901.7	292.1	6.3	692.1		66.5	20	680.0

Use 1500 Lbs dimensions for these sizes.

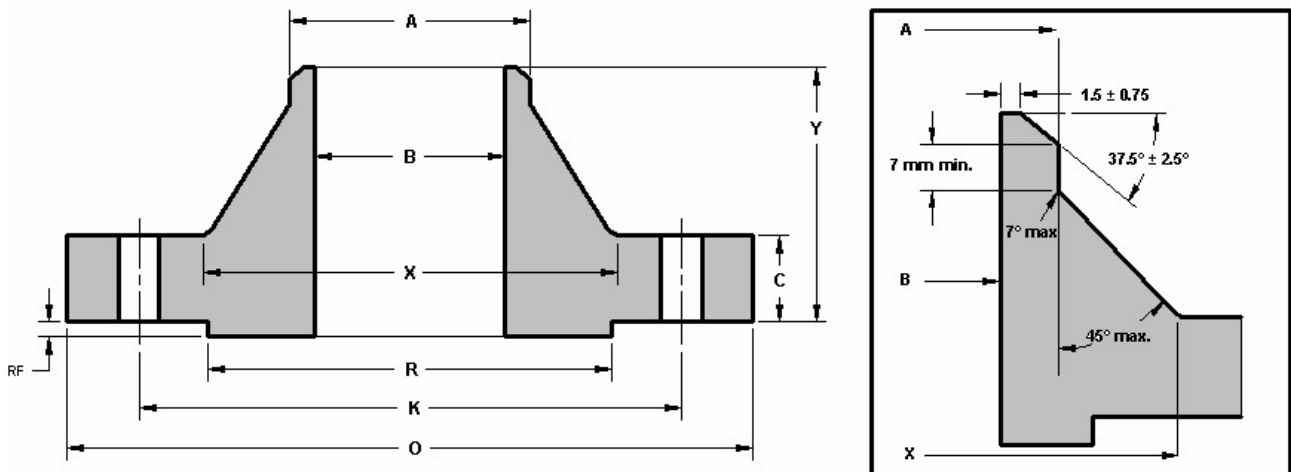
As per requested schedule.

30" and 36" also available.
Contact the sales team for more information.

Welding Neck Flanges

1500 Lb

ASME B16.5



Dimensions are in mm

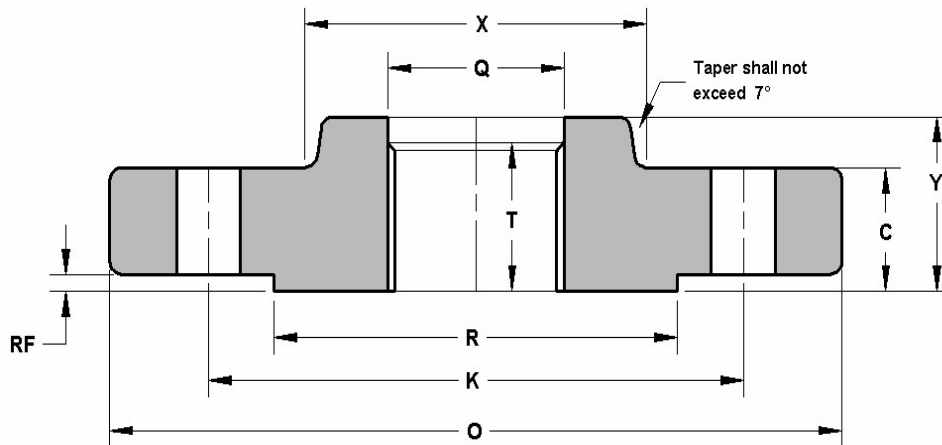
DN	O	C	X	A	K	Y	RF	R	B	Ø HOLES	NO. HOLES	Kg. APPROX
1/2	120.6	22.3	38.1	21.3	82.5	60.4	6.3	35.0	As per requested schedule.	22.3	4	1.9
3/4	130.0	25.4	44.4	26.6	88.9	69.8	6.3	42.9		22.3	4	2.6
1"	149.3	28.4	52.3	33.5	101.6	73.1	6.3	50.8		25.4	4	3.8
1 1/4"	158.7	28.4	63.5	42.1	111.2	73.1	6.3	63.5		25.4	4	4.4
1 1/2"	177.8	31.7	69.8	48.2	123.9	82.5	6.3	73.1		28.4	4	6.1
2"	215.9	38.1	104.6	60.4	165.1	101.6	6.3	91.9		25.4	8	11.1
2 1/2"	244.3	41.1	123.9	73.1	190.5	104.6	6.3	104.6		28.4	8	15.5
3"	266.7	47.7	133.3	88.9	203.2	117.3	6.3	127.0		31.7	8	20.4
4"	311.1	53.8	162.0	114.3	241.3	123.9	6.3	157.2		35.0	8	30.5
5"	374.6	73.1	196.8	141.2	292.1	155.4	6.3	185.6		41.1	8	58.0
6"	393.7	82.5	228.6	168.4	317.5	171.4	6.3	215.9		38.1	12	70.0
8"	482.6	91.9	292.1	219.2	393.7	212.8	6.3	269.7		44.4	12	125.0
10"	584.2	107.9	368.3	273.0	482.6	254.0	6.3	323.8		50.8	12	204.0
12"	673.1	123.9	450.8	323.8	571.5	282.4	6.3	381.0		53.8	16	303.0
14"	749.3	133.3	495.3	355.6	635.0	298.4	6.3	412.7		60.4	16	427.0
16"	825.5	146.0	552.4	406.4	704.8	311.1	6.3	469.9		66.5	16	570.0
18"	914.4	162.0	596.9	457.2	774.7	327.1	6.3	533.4		73.1	16	740.0
20"	984.2	177.8	641.3	508.0	831.8	355.6	6.3	584.2		79.2	16	935.0
24"	1168.4	203.2	762.0	609.6	990.6	406.4	6.3	692.1		91.9	16	1515.0

30" and 36" also available.
Contact the sales team for more information.

Screwed Flanges

150 Lb

ASME B16.5



Dimensions are in mm.

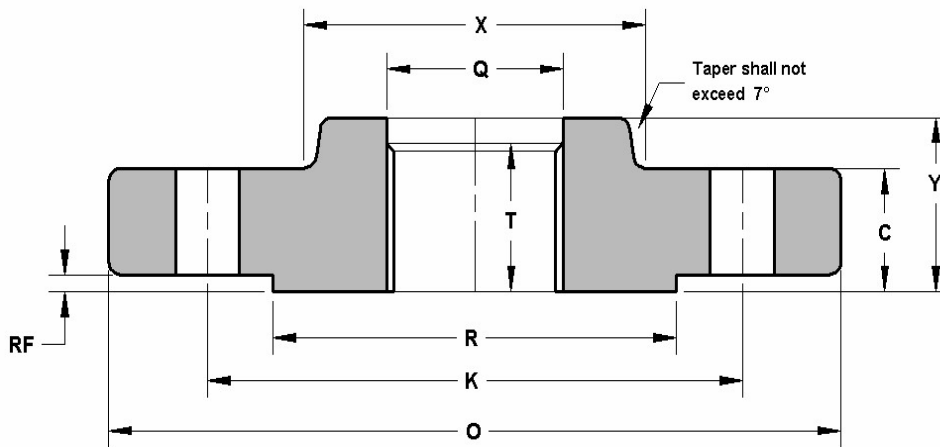
DN	O	C	X	K	Y	RF	R	Q	T	Ø HOLES	NO. HOLES	Kg. APPROX
1/2	88.9	11.1	30.2	60.4	15.7	1.5	35.0		15.7	15.7	4	0.4
3/4	98.5	12.7	38.1	69.8	15.7	1.5	42.9		15.7	15.7	4	0.7
1"	107.9	14.2	49.2	79.2	17.5	1.5	50.8		17.5	15.7	4	0.9
1 1/4"	117.3	15.7	58.6	88.9	20.5	1.5	63.5		20.5	15.7	4	1.2
1 1/2"	127.0	17.5	65.0	98.5	22.3	1.5	73.1		22.3	15.7	4	1.5
2"	152.4	19.0	77.7	120.6	25.4	1.5	91.9		25.4	19.0	4	2.3
2 1/2"	177.8	22.3	90.4	139.7	28.4	1.5	104.6		28.4	19.0	4	3.7
3"	190.5	23.8	107.9	152.4	30.2	1.5	127.0		30.2	19.0	4	4.2
4"	228.6	23.8	134.8	190.5	33.2	1.5	157.2		33.2	19.0	8	5.9
5"	254.0	23.8	163.5	215.9	36.5	1.5	185.6		36.5	22.3	8	7.0
6"	279.4	25.4	192.0	241.3	39.6	1.5	215.9		39.6	22.3	8	8.4
8"	342.9	28.4	246.1	298.4	44.4	1.5	269.7		44.4	22.3	8	13.0
10"	406.4	30.2	304.8	361.9	49.2	1.5	323.8		49.2	25.4	12	17.8
12"	482.6	31.7	365.2	431.8	55.6	1.5	381.0		55.6	25.4	12	29.5
14"	533.4	35.0	400.0	476.2	57.1	1.5	412.7		57.1	28.4	12	39.0
16"	596.9	36.5	457.2	539.7	63.5	1.5	469.9		63.5	28.4	16	42.0
18"	635.0	39.6	504.9	577.8	68.3	1.5	533.4		68.3	31.7	16	54.0
20"	698.5	42.9	558.8	635.0	73.1	1.5	584.2		73.1	31.7	20	68.0
24"	812.8	47.7	663.4	749.3	82.5	1.5	692.1		82.5	35.0	20	93.0

Available in NPT, BSPP or BSPT

Screwed Flanges

300 Lb

ASME B16.5



Dimensions are in mm.

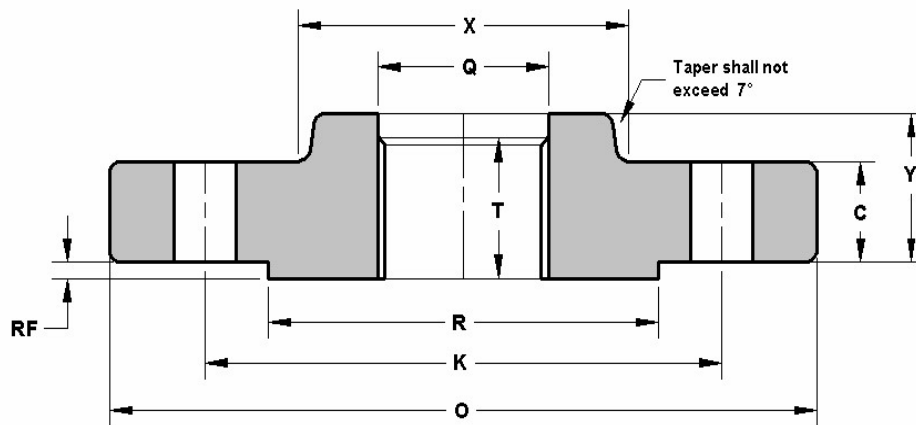
DN	O	C	X	K	Y	RF	R	Q	T	Ø HOLES	N. HOLES	Kg. APPROX
1/2	95.2	14.2	38.1	66.5	22.3	1.5	35.0	23.6	15.7	15.7	4	0.7
3/4	117.3	15.7	47.7	82.5	25.4	1.5	42.9	28.9	15.7	19.0	4	1.2
1"	123.9	17.5	53.8	88.9	26.9	1.5	50.8	35.8	17.5	19.0	4	1.4
1"1/4	133.3	19.0	63.5	98.5	26.9	1.5	63.5	44.4	20.5	19.0	4	1.9
1"1/2	155.4	20.5	69.8	114.3	30.2	1.5	73.1	50.5	22.3	22.3	4	2.8
2"	165.1	22.3	84.0	127.0	33.2	1.5	91.9	63.5	28.4	19.0	8	3.3
2"1/2	190.5	25.4	100.0	149.3	38.1	1.5	104.6	76.2	31.7	22.3	8	4.6
3"	209.5	28.4	117.3	168.1	42.9	1.5	127.0	92.2	31.7	22.3	8	6.3
4"	254.0	31.7	146.0	200.1	47.7	1.5	157.2	117.6	36.5	22.3	8	10.2
5"	279.4	35.0	177.8	234.9	50.8	1.5	185.6	144.5	42.9	22.3	8	12.9
6"	317.5	36.5	206.2	269.7	52.3	1.5	215.9	171.4	45.9	22.3	12	18.0
8"	381.0	41.1	260.3	330.2	61.9	1.5	269.7	222.2	50.8	25.4	12	26.0
10"	444.5	47.7	320.5	387.3	66.5	1.5	323.8	276.3	55.6	28.4	16	37.5
12"	520.7	50.8	374.6	450.8	73.1	1.5	381.0	328.6	60.4	31.7	16	52.0
14"	584.2	53.8	425.4	514.3	76.2	1.5	412.7	360.4	63.5	31.7	20	72.0
16"	647.7	57.1	482.6	571.5	82.5	1.5	469.9	411.2	68.3	35.0	20	100.0
18"	711.2	60.4	533.4	628.6	88.9	1.5	533.4	462.0	69.8	35.0	24	126.0
20"	774.7	63.5	587.2	685.8	95.2	1.5	584.2	512.8	73.1	35.0	24	148.0
24"	914.4	69.8	701.5	812.8	106.4	1.5	692.1	614.4	82.5	41.1	24	222.0

Available in NPT, BSPP or BSPT

Screwed Flanges

600 Lb

ASME B16.5



Dimensions are in mm

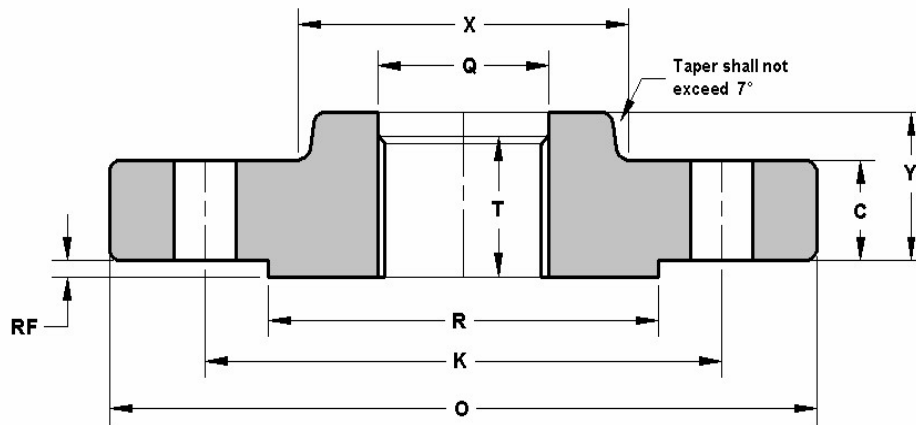
DN	O	C	X	K	Y	RF	R	Q	T	Ø HOLES	NO. HOLES	Kg. APPROX
1/2	95.2	14.2	38.1	66.5	22.3	6.3	35.0	23.6	15.7	15.7	4	1.0
3/4	117.3	15.7	47.7	82.5	25.4	6.3	42.9	28.9	15.7	19.0	4	1.6
1"	123.9	17.5	53.8	88.9	26.9	6.3	50.8	35.8	17.5	19.0	4	1.8
1 1/4"	133.3	20.5	63.5	98.5	28.4	6.3	63.5	44.4	20.5	19.0	4	2.6
1 1/2"	155.4	22.3	69.8	114.3	31.7	6.3	73.1	50.5	22.3	22.3	4	3.3
2"	165.1	25.4	84.0	127.0	36.5	6.3	91.9	63.5	28.4	19.0	8	3.9
2 1/2"	190.5	28.4	100.0	149.3	41.1	6.3	104.6	76.2	31.7	22.3	8	6.0
3"	209.5	31.7	117.3	168.1	45.9	6.3	127.0	92.2	35.0	22.3	8	7.4
4"	273.0	38.1	152.4	215.9	53.8	6.3	157.2	117.6	41.1	25.4	8	17.0
5"	330.2	44.4	188.9	266.7	60.4	6.3	185.6	144.5	47.7	28.4	8	26.5
6"	355.6	47.7	222.2	292.1	66.5	6.3	215.9	171.4	50.8	28.4	12	32.0
8"	419.1	55.6	273.0	349.2	76.2	6.3	269.7	222.2	57.1	31.7	12	46.0
10"	508.0	63.5	342.9	431.8	85.8	6.3	323.8	276.3	65.0	35.0	16	74.0
12"	558.8	66.5	400.0	488.9	91.9	6.3	381.0	328.6	69.8	35.0	20	90.0
14"	603.2	69.8	431.8	527.0	93.7	6.3	412.7	360.4	73.1	38.1	20	108.0
16"	685.8	76.2	495.3	603.2	106.4	6.3	469.9	411.2	77.7	41.1	20	150.0
18"	742.9	82.5	546.1	654.0	117.3	6.3	533.4	462.0	79.2	44.4	20	188.0
20"	812.8	88.9	609.6	723.9	127.0	6.3	584.2	512.8	82.5	44.4	24	230.0
24"	939.8	101.6	717.5	838.2	139.7	6.3	692.1	614.4	91.9	50.8	24	325.0

Available in NPT, BSPP or BSPT

Screwed Flanges

900 Lb

ASME B16.5



Dimensions are in mm.

DN	O	C	X	K	Y	RF	R	Q	T	Ø HOLES	NO. HOLES	Kg. APPROX
1/2												
3/4												
1"												
1 1/4"												
1 1/2"												
2"												
2 1/2"												
3"	241.3	38.1	127.0	190.5	53.8	6.3	127.0	92.2	41.1	25.4	8	11.9
4"	292.1	44.4	158.7	234.9	69.8	6.3	157.2	117.6	47.7	31.7	8	20.0
5"	349.2	50.8	190.5	279.4	79.2	6.3	185.6	144.5	53.8	35.0	8	32.5
6"	381.0	55.6	234.9	317.5	85.8	6.3	215.9	171.4	57.1	31.7	12	41.7
8"	469.9	63.5	298.4	393.7	101.6	6.3	269.7	222.2	63.5	38.1	12	77.5
10"	546.1	69.8	368.3	469.9	107.9	6.3	323.8	276.3	71.3	38.1	16	110.0
12"	609.6	79.2	419.1	533.4	117.3	6.3	381.0	328.6	76.2	38.1	20	149.0
14"	641.3	85.8	450.8	558.8	130.0	6.3	412.7	360.4	82.5	41.1	20	181.0
16"	704.8	88.9	508.0	615.9	133.3	6.3	469.9	411.2	85.8	44.4	20	194.0
18"	787.4	101.6	565.1	685.8	152.4	6.3	533.4	462.0	88.9	50.8	20	274.0
20"	857.2	107.9	622.3	749.3	158.7	6.3	584.2	512.8	91.9	53.8	20	332.0
24"	1041.4	139.7	749.3	901.7	203.2	6.3	692.1	614.4	101.6	66.5	20	637.0

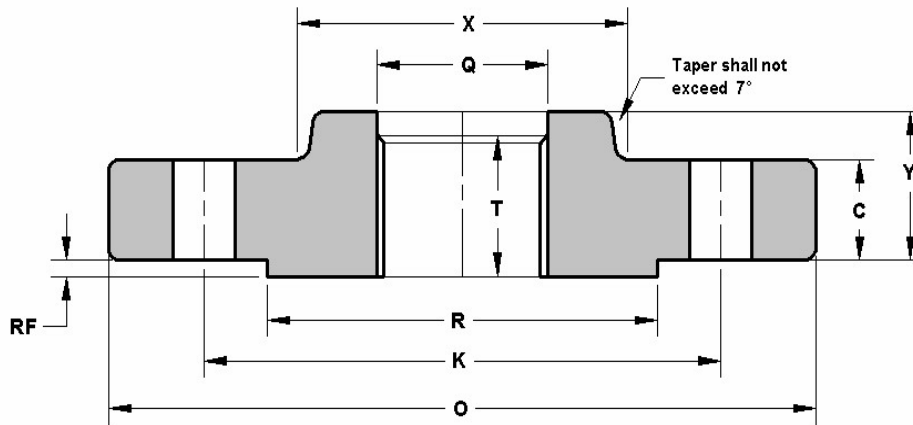
Use 1500 Lbs dimensions for these sizes.

Available in NPT, BSPP or BSPT

Screwed Flanges

1500 Lb

ASME B16.5



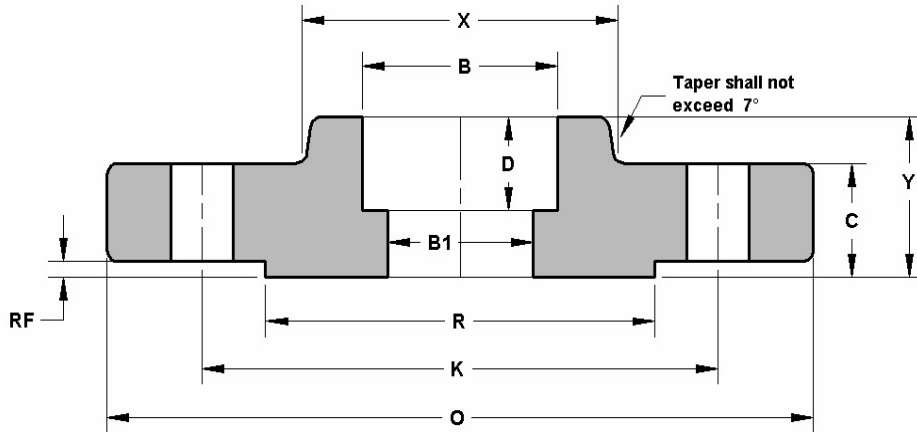
Dimensions are in mm.

DN	O	C	X	K	Y	RF	R	Q	T	Ø HOLES	NO - HOLES	Kg. APPROX
1/2	120.6	22.3	38.1	82.5	31.7	6.3	35.0	23.6	22.3	22.3	4	1.7
3/4	130.0	25.4	44.4	88.9	35.0	6.3	42.9	28.9	25.4	22.3	4	2.4
1"	149.3	28.4	52.3	101.6	41.1	6.3	50.8	35.8	28.4	25.4	4	3.5
1"1/4	158.7	28.4	63.5	111.2	41.1	6.3	63.5	44.4	30.2	25.4	4	4.0
1"1/2	177.8	31.7	69.8	123.9	44.4	6.3	73.1	50.5	31.7	28.4	4	5.5
2"	215.9	38.1	104.6	165.1	57.1	6.3	91.9	63.5	38.1	25.4	8	10.0
2"1/2	244.3	41.1	123.9	190.5	63.5	6.3	104.6	76.2	47.7	28.4	8	13.9

Available in NPT, BSPP or BSPT

Socket Weld Flanges 150Lb

ASME B16.5

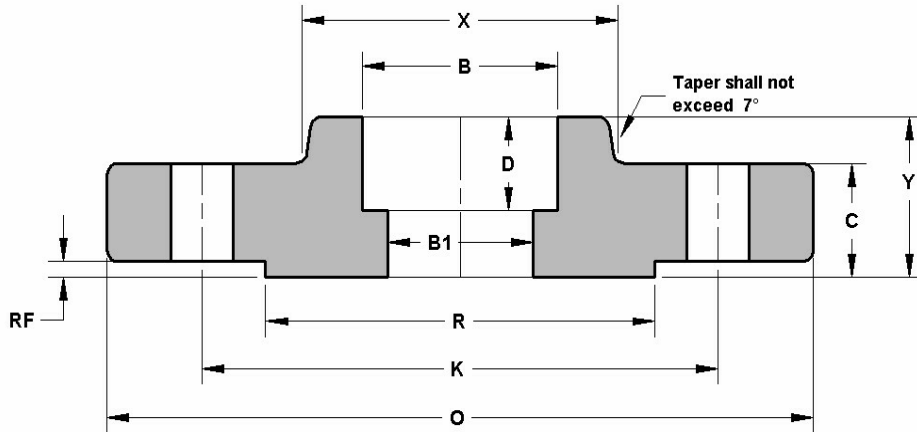


Dimensions are in mm.

DN	O	C	X	K	Y	RF	R	B	B1	D	Ø HOLES	NO. HOLES	Kg. APPROX
1/2	88.9	11.1	30.2	60.4	15.7	1.5	35.0	22.3	As per requested schedule.	9.6	15.7	4	0.4
3/4	98.5	12.7	38.1	69.8	15.7	1.5	42.9	27.6		11.1	15.7	4	0.7
1"	107.9	14.2	49.2	79.2	17.5	1.5	50.8	34.5		12.7	15.7	4	0.8
1"1/4	117.3	15.7	58.6	88.9	20.5	1.5	63.5	43.1		14.2	15.7	4	1.1
1"1/2	127.0	17.5	65.0	98.5	22.3	1.5	73.1	49.5		15.7	15.7	4	1.4
2"	152.4	19.0	77.7	120.6	25.4	1.5	91.9	61.9		17.5	19.0	4	2.2
2"1/2	177.8	22.3	90.4	139.7	28.4	1.5	104.6	74.6		19.0	19.0	4	3.6
3"	190.5	23.8	107.9	152.4	30.2	1.5	127.0	90.6		20.5	19.0	4	4.1
4"	228.6	23.8	158.7	234.9	33.3	1.5	157.2	139.3		25.4	19.0	8	4.6
6"	279.4	23.8	224.9	276.3	36.5	1.5	215.9	157.5	28.6	22.2	8	5.4	

Socket Weld Flanges 300Lb

ASME B16.5

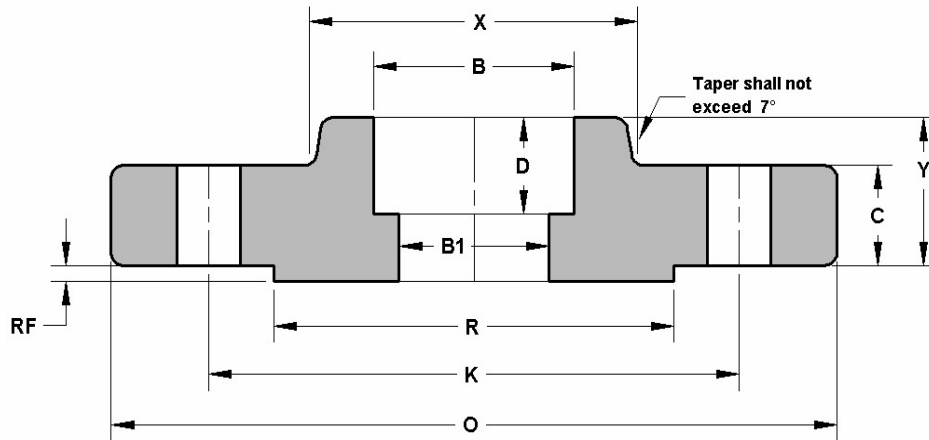


Dimensions are in mm.

DN	O	C	X	K	Y	RF	R	B	B1	D	Ø HOLES	NO. HOLES	Kg. APPROX
1/2	95.0	12.7	38	66.5	21	1.5	35.0	22.4	As per requested schedule.	10.0	15.7	4	1.0
3/4	117.0	14.2	48	82.5	24	1.5	42.9	27.7		11.0	19.0	4	1.2
1"	124.0	15.7	54	88.9	25	1.5	50.8	34.5		13.0	19.0	4	1.4
1"1/4	133.0	17.5	64	98.5	25	1.5	63.5	43.2		14.0	19.0	4	1.7
1"1/2	155.0	19.0	70	114.3	29	1.5	73.1	49.5		16.0	22.3	4	1.8
2"	165.0	20.6	84	127.0	32	1.5	91.9	62.0		17.0	19.0	8	2.9
2"1/2	190.0	23.9	100	149.3	37	1.5	104.6	74.7		19.0	22.3	8	4.4
3"	210.0	26.9	117	168.1	41	1.5	127.0	90.7		21.0	22.3	8	5.9

Socket Weld Flanges 600Lb

ASME B16.5

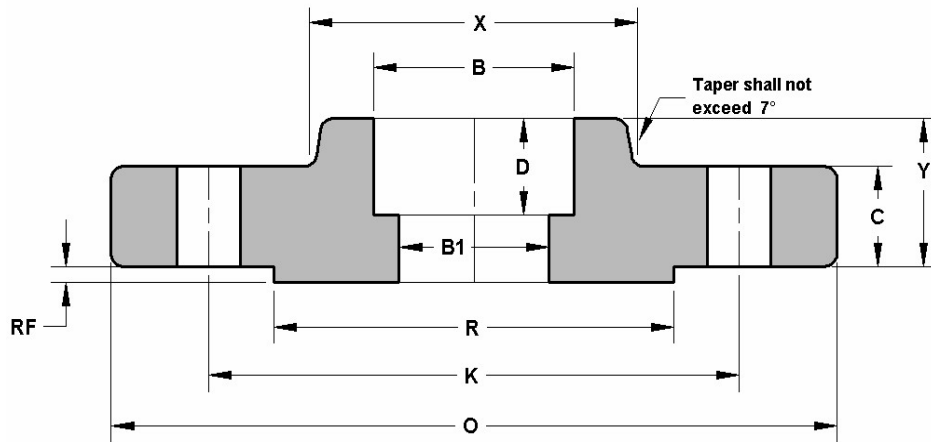


Dimensions are in mm.

DN	O	C	X	K	Y	RF	R	B	B1	D	Ø HOLES	NO . HOLES	Kg. APPROX
1/2	95.2	14.2	38.1	66.5	22.3	6.3	35.0	22.3	As per requested schedule.	9.6	15.7	4	1.0
3/4	117.3	15.7	47.7	82.5	25.4	6.3	42.9	27.6		11.1	19.0	4	1.6
1"	123.9	17.5	53.8	88.9	26.9	6.3	50.8	34.5		12.7	19.0	4	1.8
1"1/4	133.3	20.5	63.5	98.5	28.4	6.3	63.5	43.1		14.2	19.0	4	2.6
1"1/2	155.4	22.3	69.8	114.3	31.7	6.3	73.1	49.5		15.7	22.3	4	3.3
2"	165.1	25.4	84.0	127.0	36.5	6.3	91.9	61.9		17.5	19.0	8	3.9
2"1/2	190.5	28.4	100.0	149.3	41.1	6.3	104.6	74.6		19.0	22.3	8	6.0
3"	209.5	31.7	117.3	168.1	45.9	6.3	127.0	90.6		20.5	22.3	8	7.4

Socket Weld Flanges 1500Lb

ASME B16.5



Dimensions are in mm.

DN	O	C	X	K	Y	RF	R	B	B1	D	Ø HOLES	NO. HOLES	Kg. APPROX
1/2	120.6	22.3	38.1	82.5	31.7	6.3	35.0	22.3	As per requested schedule.	9.6	22.3	4	1.7
3/4	130.0	25.4	44.4	88.9	35.0	6.3	42.9	27.6		11.1	22.3	4	2.4
1"	149.3	28.4	52.3	101.6	41.1	6.3	50.8	34.5		12.7	25.4	4	3.5
1"1/4	158.7	28.4	63.5	111.2	41.1	6.3	63.5	43.1		14.2	25.4	4	4.0
1"1/2	177.8	31.7	69.8	123.9	44.4	6.3	73.1	49.5		15.7	28.4	4	5.5
2"	215.9	38.1	104.6	165.1	57.1	6.3	91.9	61.9		17.5	25.4	8	10.0
2"1/2	244.3	41.1	123.9	190.5	63.5	6.3	104.6	74.6		19.0	28.4	8	13.9
3"	266.7	47.7	133.3	203.2		6.3	127.0				31.7	8	